

NOTE: This product must be installed and maintained in strict accordance with the National Electrical Code and any other Applicable local electrical code. Refer to the System Control Drawing in the TL95 Manual for specific installation information. Failure to observe this warning could result in serious injuries or damages.

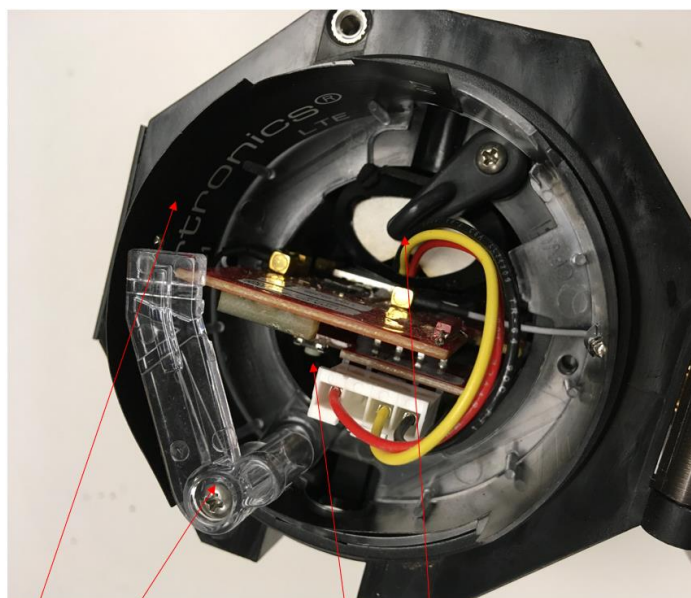
How do I replace a battery?

Warning: TO PREVENT IGNITION OF A HAZARDOUS ATMOSPHERE, THE BATTERY MUST ONLY BE CHANGED IN AN AREA KNOWN TO BE NONHAZARDOUS. If you are unsure as to whether the area is hazardous, consult the appropriate personnel who has knowledge of Class 1 Division 1 hazardous areas before proceeding. Alternately, assume the area is hazardous and do the following.

Replace the battery pack with Telular part number 394-00023 only. Use of any other battery type may present a risk of fire or explosion.

If the tank contains flammable liquid or vapor, extinguish all flames and smoking material before performing the battery replacement procedure.

1. Before and upon arrival at the instrument, discharge any static charge on your person by grounding yourself, either by wearing an anti-static wrist strap (preferred) or by touching a grounded metal object, such as a copper water pipe.
2. Carefully open the top of the instrument by unscrewing the two Phillips screws till they are loose. Do not remove them from the lid. Do not unplug the battery while still in the hazardous area. Continue opening the lid till it is horizontal. Next remove the caddy Hold Down screw on the top of the handle and set it aside. Remove the swing arm that holds the circuit board down and set it aside. With your finger rotate the Battery Hold Down arm to the side so that the battery is free. You may need to loosen the screw slightly. Grasp the caddy assembly firmly by the Caddy Handle and pull it straight up and out of the housing rocking it side to side slightly if necessary.
3. Transport the caddy with the battery out of the hazardous area before proceeding with the battery replacement procedure. It is recommended to have a static bag available to place the caddy into. Do not use ordinary plastic since it produces static. Close the lid of the instrument to keep dirt out.



Antenna Caddy Handle & Hold Down Start Switch Battery Hold Down

Fig. 1 Top view pat identification 1



Fig. 2 The caddy is unseated 1

Leave the battery attached till you are out of the hazardous area

4. Once you are in a non-hazardous area discharge any static you may have accumulated on your person by grounding yourself again
5. You may unplug the old battery by grasping the connector release and squeezing tightly. Next pull the battery connector straight up and out of the mating connector, rocking it side to side if necessary.
6. Replace the battery pack with [part number 394-00023 only](#) to ensure safety.
7. Plug the new battery pack into the same connector till the catch clicks and is flush with the mating connector.

The following LED light sequence will be initiated once the battery is plugged in:

- A green LED will begin to flash several times and eventually stay on. It will flash a few times and then go out completely. The unit has been successfully installed & initiated.

NOTE: If you see a red light at any time during this sequence you will need to count the number of Green flashes immediately following the red light. This number will need to be provided to Customer Care at 844-700-8265 in order to identify the error message the unit has provided.

8. Allow the instrument to cycle through its normal procedure and once the light is extinguished you may transport it back to the hazardous area. Open the lid to the horizontal position and lower the caddy into the vertical tracks on the inside center of the housing. Refer to Fig. 1 again to make sure you have positioned the Caddy correctly before you attempt to reseat it. Check that the Caddy Handle is flush with the housing. If not, the Caddy is not seated in the correct position.

9. Press down on the Battery and rotate the Battery Hold Down over the edge of the Battery.

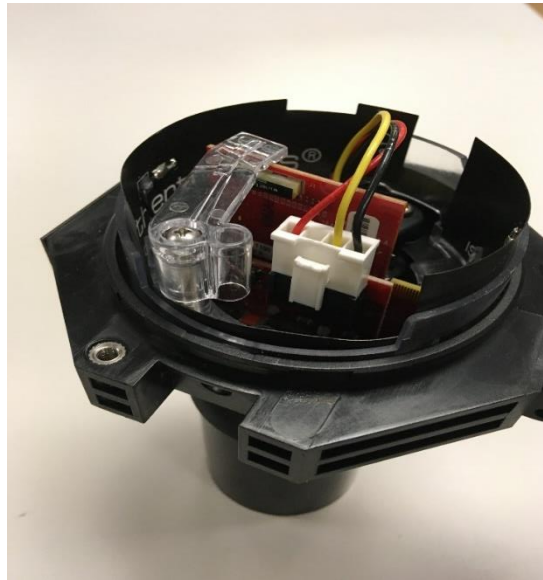


Fig. 3 Caddy is remounted into housing 1

10. It is recommended to check its operation after closing the lid. Use the magnet to start the unit. Close the lid and tighten both screws securely. Check the Website to see the level. Note that the website will show invalid data if the caddy is not properly seated into the connector at the bottom of the housing.

11. Lithium Battery Disposal

For disposal, batteries must be packaged and shipped in accordance with transportation regulations, to a proper disposal site. The U.S. Department of Transportation authorizes shipment of "Lithium batteries for disposal" by motor vehicle only in regulation 173.1015 of CFR 49 (effective January 5, 1983). For additional information contact: U.S. Department of Transportation Research and Special Programs Administration 400 Seventh Street, S.W. Washington, D.C. 20590 ATTENTION Do not incinerate or dispose of lithium batteries in general trash collection. They may explode or rupture violently. Check state and local regulations dealing with the disposal of these materials. You are legally responsible for hazards created while disposing of depleted batteries. Do the following!

- Visually inspect all batteries for damage to the battery casing or leakage of electrolyte. If a battery is damaged and/or leaking, contact your local EPA for instructions.
- If the battery has leads and is clean and undamaged, use side cutters to remove the leads as close to the body of the battery as possible.
- Put clean and undamaged batteries in a polyethylene bag and heat seal the bag.
- Store the bagged batteries in a closed metal container filled with vermiculite. Alternate layers of batteries and vermiculite.
- Contact your local Environmental Protection Agency (EPA) office for information about battery disposal companies and proper labeling of battery containers. Lithium batteries can be stored and shipped as universal waste in most states in the United States of America. Alternately, you can ship lithium batteries as hazardous waste.

ATTENTION - Do not damage the battery case when removing leads.

For further assistance, contact Fluid Alert
Customer Support : **844-700-8265**
Thank you, we appreciate your business!